



CTERA C200 Cloud Attached Storage® Appliance

All-in-One Network Attached Storage, Backup Appliance and Gateway to Cloud Services

- Integrated On-Site & Cloud Backup and Recovery
- Remote Access and Central Management
- File Sharing on The Local Network and in The Cloud



Hybrid 2-Bay Storage Appliance with Integrated Cloud Services for Small Business and Offices

Ideal for small businesses and branch offices, the CTERA C200 appliance combines network attached storage (NAS) functionality with comprehensive data protection, providing fast local backup & recovery integrated with cloud storage for backup, remote access and file sharing.

With the included CTERA backup software, managed agents, remote management capabilities and end-to-end data protection, the C200 provides a cost-effective, easy-to-manage alternative to more expensive, disparate solutions.

Hybrid Cloud & On-Premises

Lightning-fast on-site backup and restore, with integrated, globally de-duplicated, efficient cloud backup that provides an off-site copy for disaster recovery.

Complete Data Protection

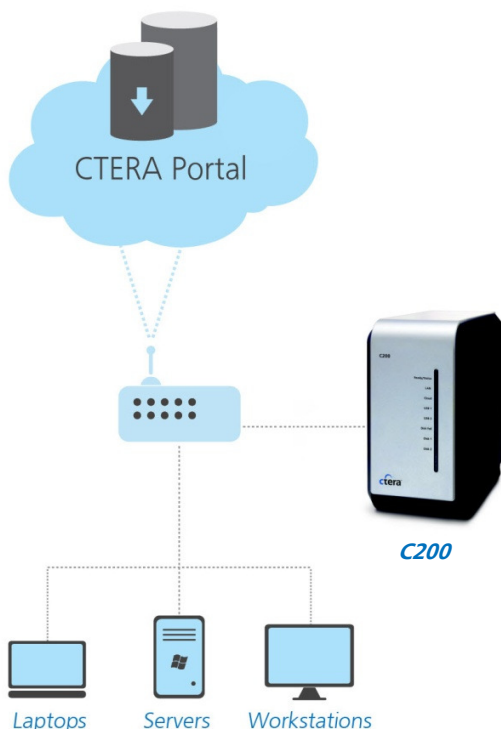
Protect the business against data loss and minimize disaster recovery time using a single solution – including roaming laptops, remote users, servers and workstations.

Central Management

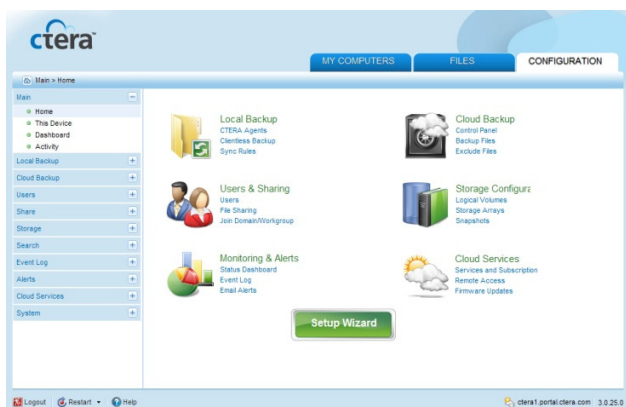
Using the CTERA Portal, MSPs and enterprise IT administrators can manage and monitor any number of CTERA appliances from a unified Web console.

File-Based Collaboration

Access local and cloud-stored files from anywhere, on locally or over the Web. Share files with project groups and occasional users with email invitations. Synchronize files to and from the cloud between multiple users.



Install the C200 on the local network for hybrid local / cloud backup & recovery, file sharing and synchronization



CTERA's easy-to-use, browser-based user interface



About CTERA Networks

CTERA™ Networks revolutionizes data protection and storage for SMBs and enterprise branch offices with Cloud Attached Storage®, a solution that combines cloud storage services with on-premises appliances in an all-in-one solution for backup and recovery, shared storage and file-based collaboration.

CTERA was the first company to introduce cloud storage gateway appliances, and its scalable cloud service delivery platform enables service providers and IT resellers to easily deliver managed cloud storage services to their customers, using the public or private cloud backend of their choice.

For more information, visit www.atera.com.

Appliance Features

- Clientless backup of local desktops and file servers
- Roaming laptop backup with CTERA Workstation Agent
- Application-aware server backup with CTERA Server Agent (optional add-on)
- RAID 0/1 and JBOD
- NTFS/FAT32/Ext3/Next3 file systems
- UPnP and Bonjour discovery
- Windows file sharing (CIFS), Apple file sharing (AFP), NFS, Time Machine, rsync, WebDAV
- iSCSI target
- FTP server
- Resizable logical volumes
- Thin-provisioned multiple snapshots with Next3
- AES-256 volume encryption
- Microsoft Active Directory support
- Role-based user management
- User disk quotas
- S.M.A.R.T HDD monitoring
- Secure remote management and real-time monitoring
- Custom email alerts and reports
- Full-text search
- Web-based UI requires MS Internet Explorer 7, Firefox 3, Chrome 5 or newer

Cloud Features

- Optimized incremental cloud backup with data compression
- Block-level global de-duplication
- Previous file versions with nested snapshot retention
- Automated scheduled backup
- Folder and attribute-based backup sets
- Restore methods: Windows Previous Versions, Virtual cloud drive, local appliance Web interface, and via CTERA Portal
- Read/write cloud file manager
- Synchronization of file between cloud folder and multiple users
- Offline seeding option for assisted initial backup
- Secure Web-based direct access to backups from anywhere
- Project-based and time-limited invitation-based cloud file sharing
- 256-bit AES encryption of all backups, with SHA-1 fingerprinting and user-specific secret passphrase
- Data transfer over 128-bit SSL

CTERA Agent Features

- Roaming laptop backup
- Disk-level "bare metal" backup, recovery to similar hardware or VM
- Optional CTERA Server Agent for Microsoft Exchange, SQL Server, Active Directory
- Locked/open files backup
- Agents centrally managed from the appliance Web interface
- Workstation Agent requires Windows 7, Vista or XP
- Server Agent requires Windows 7, Vista, 2003 SP1, 2008 or 2008 R2 Server, Linux (SUSE/RHEL/Ubuntu)
- 20 Workstation Agents included

Hardware Specifications

- 2 x 3.5" SATA Hot Swap hard drive support with S.M.A.R.T
- Storage capacity up to 6TB
- 2 x USB 2/0 high-speed ports for external drives
- 1 x Gigabit Ethernet port
- Power consumption 50W max
- FCC, CE, RoHS, WEEE compliance
- Operating environment 0-40°C, Humidity 5%-95% non-condensed
- Dimensions (W x D x H): 95 x 210 x 162.5 mm / 3.74 x 8.27 x 6.4 inches
- Weight: 1.1 Kg (exc. hard drives)