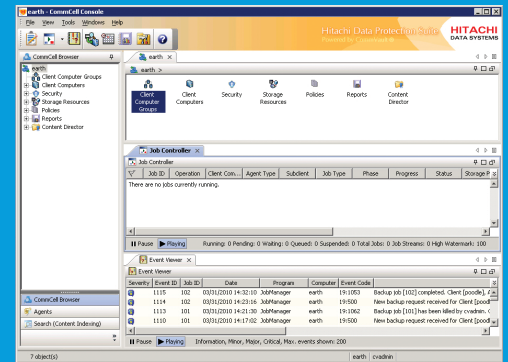


Hitachi Data Protection Suite Software, Powered by CommVault®

Meet backup and recovery objectives while optimizing investments through simplified, enterprise-class data protection for file systems, applications, databases and virtual machines.



Unified View and De-duplication for Greater Data Management Efficiency

The Business Challenge

Backup and recovery is usually about maximizing returns on investment. It is a fine balancing act between meeting data retention needs and recovery objectives while deriving maximum value from limited infrastructure and resource investments. In the last few years, exponential data growth, newer and faster technologies, and geographical expansion have upset this balance and made it extremely difficult and cost prohibitive for IT to continue meeting aggressive data management demands.

The Hitachi Data Protection Suite Solution

As part of the Hitachi Data Protection Suite of software, Hitachi Backup and Recovery software allows users to perform high speed backups and restores to help maintain data access via a single, unified

browser interface. One unified view of network attached storage (NAS), storage area network (SAN) or local area network (LAN) data lets users keep an eye on enterprise operations alongside another window focused on a single vital system or logical resource. This capability delivers greater data management efficiency, better data availability and higher reliability.

Fast, Comprehensive Search and Find

Hitachi Data Protection Suite Backup and Recovery software provides unique capabilities to search across all copies of managed data in a CommVault CommCell group with a single search request. Searchable fields include file and email objects, as well as time, job and location details. Search of backup copies can be combined with search of archive copies in the same CommCell group.

De-duplication

Hitachi extends the power of Hitachi Data Protection Suite with hardware and an independent, content aware de-duplication module. Hitachi De-duplication software eliminates all duplicate copies of backup and archive data managed within the guidelines of the global storage policy, regardless of source, data type or platform. A combination of content aware and segment-based de-duplication along with the scalable de-duplication database delivers better results compared to other block-based approaches.

With Hitachi Data Protection Suite, data de-duplication use can be expanded across all tiers of storage, including tape, without the need to "rehydrate" the data back into full form. Using the Hitachi automated, policy-based approach, organizations can implement hands-free migration and management of aging data quickly and efficiently.

SEAMLESS INTEGRATION WITH INDUSTRY LEADING TECHNOLOGY

- **Applications and Databases** — Microsoft® Active Directory, IBM® DB2®, IBM Informix®, Lotus Notes/Domino, Microsoft Exchange Server, Microsoft SharePoint® Systems, Microsoft SQL Server®, Novell GroupWise, Oracle, Oracle RAC, SAP R/3 and NetWeaver, Sybase
- **Client Platforms** — IBM AIX®, FreeBSD, HP-UX, Novell OES Linux, Macintosh®, Microsoft Windows® and Active Directory, Microsoft Vista, NAS NDMP, Novell NetWare and eDirectory Services, Red Flag Linux, Red Hat Linux, SGI Irix, Sun Solaris, SuSE Linux, Tru64
- **Media Agent Platforms** — AIX, HP-UX, Solaris, NetWare, Windows, Tru64 UNIX, Red Flag Linux, Red Hat Linux, SuSE Linux. Clustering options are supported.
- **De-duplication** — Windows and UNIX Media Agents
- **De-duplication Backup Copies** — Macintosh File System, Microsoft Data Protection Manager, Microsoft Exchange Mailbox, Microsoft SharePoint Documents, Microsoft Windows File System, OES File System, ProxyHost, UNIX File System
- **De-duplication Archive Copies** — Domino Mailbox, Microsoft Exchange Compliance, Microsoft Exchange Mailbox/Public Folder, UNIX File System, Microsoft Windows File System, NAS Files, Microsoft SharePoint

 **Hitachi Data Systems Corporation**
Corporate Headquarters

750 Central Expressway
 Santa Clara, California 95050-2627 USA
www.hds.com

Regional Contact Information

Americas: +1 408 970 1000 or info@hds.com
Europe, Middle East and Africa: +44 (0) 1753 618000 or info.emea@hds.com
Asia Pacific: +852 3189 7900 or hds.marketing.apac@hds.com

Hitachi is a registered trademark of Hitachi, Ltd., in the United States and other countries. Hitachi Data Systems is a registered trademark and service mark of Hitachi, Ltd., in the United States and other countries.

IBM, DB2, Informix and AIX are registered trademarks of International Business Machines Corporation.

All other trademarks, service marks and company names in this document or website are properties of their respective owners.

Notice: This document is for informational purposes only, and does not set forth any warranty, expressed or implied, concerning any equipment or service offered or to be offered by Hitachi Data Systems Corporation.

© Hitachi Data Systems Corporation 2010. All Rights Reserved. DS-017-D DG April 2010